

Power PCB Relay Card E

- 1 pole 8A, 1 form C (CO) or 1 form A (NO) contact
- 4kV coil-contact
- Vertical and horizontal version
- Versions with bifurcated contacts are available
- Wash tight
- RoHS compliant (Directive 2002/95/EC)



F0151-B



Typical applications
I/O modules, heating control, timers

Approvals

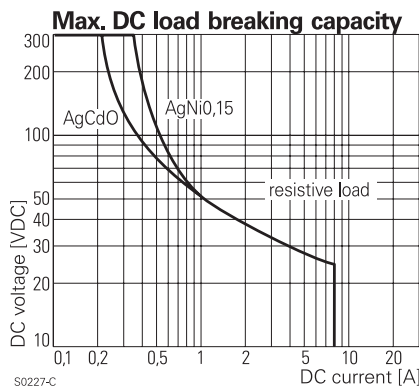
VDE REG.-Nr. 5146, UL E214025
Technical data of approved types on request

Contact Data	8A	5A	bifurcated
Contact arrangement	1 form C (CO) or 1 form A (NO)		
Rated voltage	250VAC		
Max. switching voltage	400VAC		
Rated current	8A	5A	5A
Limiting making current, max 4 s, duty factor 10%	15A	-	-
Breaking capacity max.	2000VA	1250VA	1250VA
Contact material	AgCdO, AgNi20	AgNi0.15	AgNi0.15
Contact style	single contact	single contact	bifurcated contact
Frequency of operation, with/without load	360/72000h ⁻¹		
Operate/release time typ.	7/3ms		
Bounce time typ., form A/form B	0.5/3ms		

Contact ratings

Type	Contact	Load	Cycles
IEC61810			
AgCdO	C (CO)	8A, 250VAC, resistive, 70°C	20x10 ³
AgNi20	C (CO)	8A, 250VAC, resistive, 70°C	20x10 ³
AgCdO	A (NO)	8A, 250VAC, resistive, 70°C	20x10 ³
AgNi20	A (NO)	8A, 250VAC, resistive, 70°C	30x10 ³
AgNi0.15	A (NO)	5A, 250VAC, resistive, 70°C	20x10 ³

Mechanical endurance >20x10⁶ operations



S0227-C

Coil Data

Coil voltage range 6 to 60VDC

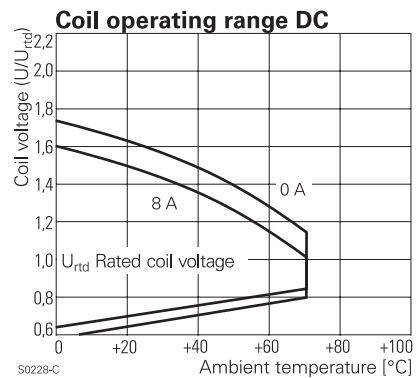
Coil versions, DC coil

Coil code	Rated voltage VDC	Operate voltage VDC	Release voltage VDC	Coil resistance $\Omega \pm 15\%^{1)}$	Rated coil power mW
001	6	4.2	0.6	80 ¹⁾	450
002	12	8.3	1.2	330 ¹⁾	436
006	24	16.8	2.4	1200	480
013	48	33.6	4.8	4700	490
023	60	42.0	6.0	7200	500

1) Coil resistance $\pm 10\%$.

All figures are given for coil without pre-energization, at ambient temperature +23°C.

Other coil voltages on request.



Insulation Data

Initial dielectric strength	
between open contacts	1000V _{rms}
between contact and coil	4000V _{rms}
Clearance/creepage	
between contact and coil	≥4/4mm
Material group of insulation parts	IIla
Tracking index of relay base	PTI225V

Power PCB Relay Card E (Continued)

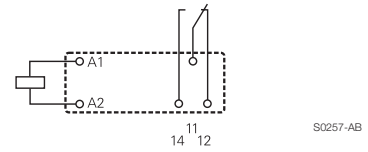
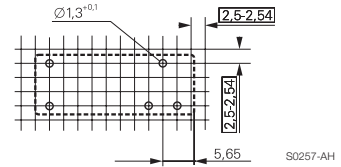
Other Data

Material compliance: EU RoHS/ELV, China RoHS, REACH, Halogen content refer to the Product Compliance Support Center at www.te.com/customersupport/rohssupportcenter	
Ambient temperature	-40 to +70°C
Category of environmental protection	RTIII - wash tight
IEC 61810	
Terminal type	PCB-THT
Mounting distance	5mm
Weight	14g
Resistance to soldering heat THT	
IEC 60068-2-20	260°C/5s
Packaging/unit	tube/20 pcs., box/400 pcs.

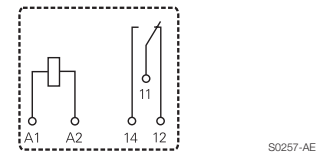
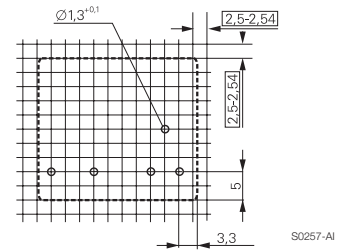
PCB layout / terminal assignment

Bottom view on solder pins

Vertical version

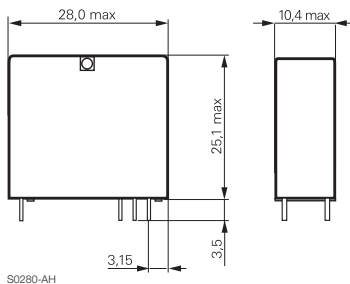


Horizontal version

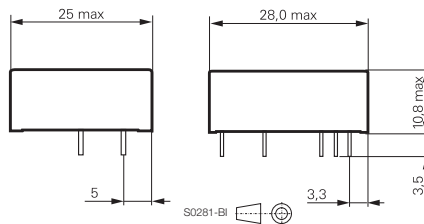


Dimensions

Vertical version



Horizontal version



Power PCB Relay Card E (Continued)

Product code structure		Typical product code		V23057	-A	0	006	-A	1	01
Type		V23057 Power PCB Relay Card E								
Version		A Horizontal		B Vertical						
Version		0 Standard								
Coil		Coil code: please refer to coil versions table								
Contact set		A Single contact								
Contact material		1 AgNi 0.15		4 AgCdO						
Contact material		2 AgNi 20								
Contact configuration		01 1 form C contact (1 CO)		02 1 form A contact (1 NO)						

Product code	Version	Contact arrangement	Contact material	Coil	Part number	
V23057-A0002-A101	Horizontal	1 form C (CO) contact	AgNi0.15	12VDC	1393215-4	
V23057-A0002-A401			AgCdO		1393215-9	
V23057-A0006-A101			AgNi0.15		2-1393215-1	
V23057-A0006-A201			AgNi 20		2-1393215-3	
V23057-A0006-A401			AgCdO		2-1393215-5	
V23057-B0001-A101	Vertical	1 form A (NO) contact	AgNi0.15	6VDC	6-1393215-6	
V23057-B0002-A101			12VDC	6-1393215-7		
V23057-B0002-A201			AgNi 20	6-1393215-9		
V23057-B0002-A401			AgCdO	7-1393215-1		
V23057-B0006-A101			AgNi0.15	24VDC	7-1393215-5	
V23057-B0006-A102			1 form A (NO) contact	7-1393215-9		
V23057-B0006-A201			1 form C (CO) contact	8-1393215-1		
V23057-B0006-A401			AgNi 20	8-1393215-5		
V23057-B0006-A402			AgCdO	8-1393215-6		
V23057-B3006-A101			1 form A (NO) contact	8-1393215-6		
V23057-B3006-A101			1 form C (CO) contact	AgNi0.15	2-1393216-6	
V23057-B3023-A101					60VDC	2-1393216-8

This list represents the most common types and does not show all variants covered by this datasheet.
Other types on request